



PROJECT complete interface

EPLAN Electric P8 / EPLAN Pro Panel

From planning through to the finished control cabinet

Intuitive configuration, intelligent functions, and a customizable user interface: the PROJECT complete software is the innovative solution for the straightforward planning of your terminal strips and the easy creation of the corresponding markings.



- Perfect integration with optimized interfaces to all common CAE programs
- Intuitive software operation, clear and convenient with customizable user interface
- Quick and easy ordering of terminal strips in real time with direct connection to the Phoenix Contact e-shop
- Comprehensive process support from planning through to the fully assembled and professionally marked DIN rail



Video: Control cabinet manufacturing with the PROJECT complete planning and marking software

Contents

Perfect CAE integration	4
-------------------------	---

PROJECT complete planning

Setting up an interface	6
-------------------------	---

Terminal strip export from EPLAN Electric P8	10
---	----

Terminal strip export to EPLAN Electric P8	14
---	----

DIN rail export from EPLAN Pro Panel	16
---	----

PROJECT complete marking

Setting up interfaces	18
-----------------------	----

Data export from EPLAN Electric P8	21
------------------------------------	----

Setting up exchange files	24
---------------------------	----

Software overview	30
-------------------	----

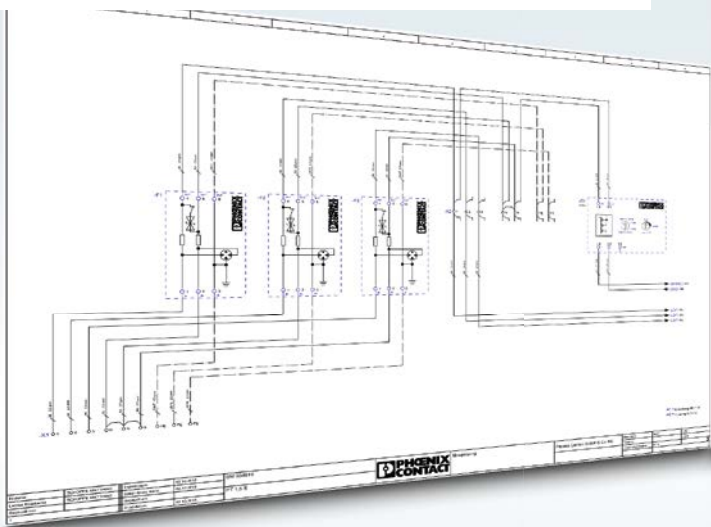
COMPLETE line



The new standard for
the control cabinet.
More information is
available on pages 32
to 35.

Perfect CAE integration

PROJECT complete comes equipped with optimized interfaces to all common CAE programs. With just a click of the mouse, the software imports the data from electrical plans and automatically designs the corresponding terminal strip. At the same time, the software automatically creates the corresponding marking solutions.

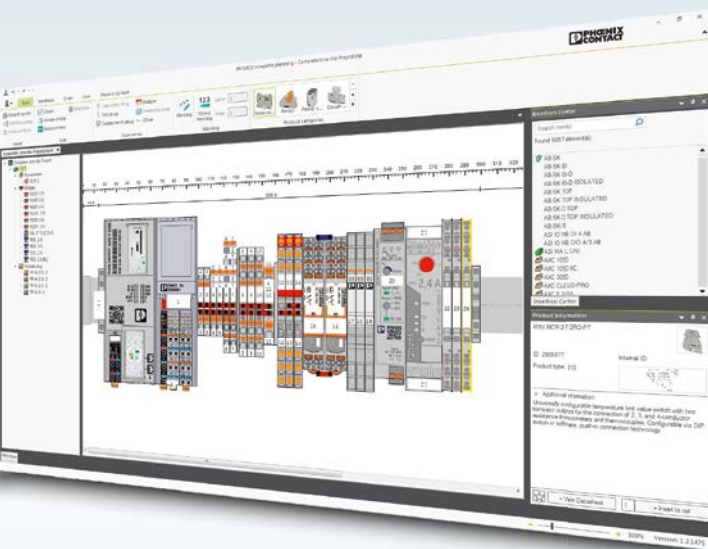


The bidirectional interface allows you to send terminal strips from the CAE program to PROJECT complete.





Video: Digital interface –
direct data exchange between
PROJECT complete and your
CAE program

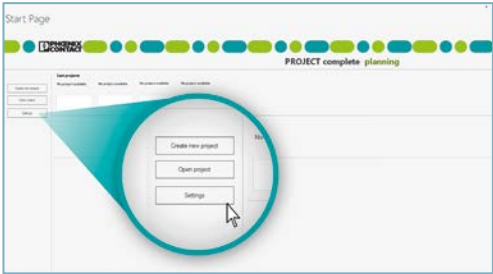


In PROJECT complete, you can replace automatically selected terminal blocks, add accessories, and exchange wire bridges with plug-in bridges. After editing the terminal strip, the changes are exported to EPLAN Electric P8 / EPLAN Pro Panel.

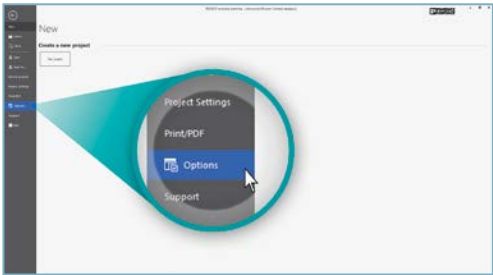
PROJECT complete planning

Setting up an interface

The interface between the PROJECT complete planning software and EPLAN Electric P8 is established in just a few clicks. Step-by-step instructions for setting up the interface are provided below. EPLAN Electric P8 must be closed to install the interface.



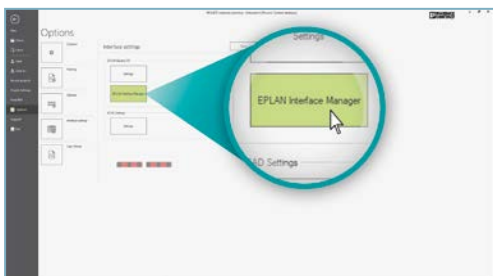
- Start the PROJECT complete planning software.
- Click on the “Settings” button to access the settings area.



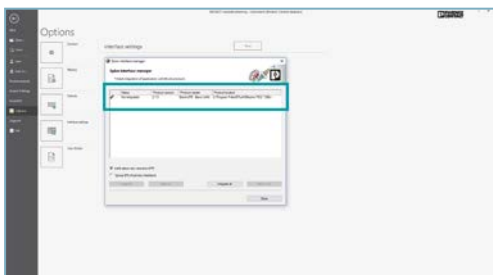
- Click on the “Options” button.



- In the Options, click on “Interface settings”.



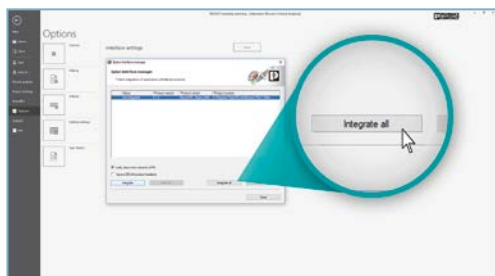
- Then click on the “EPLAN Interface Manager” button.



- The EPLAN interface manager window opens.
- This window displays the EPLAN Electric P8 versions that are installed.

PROJECT complete planning

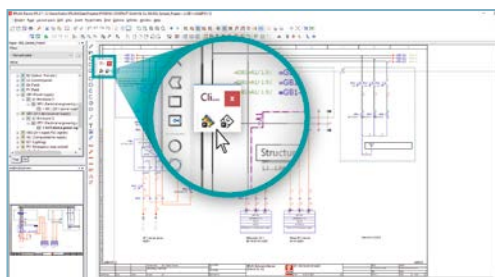
Setting up an interface



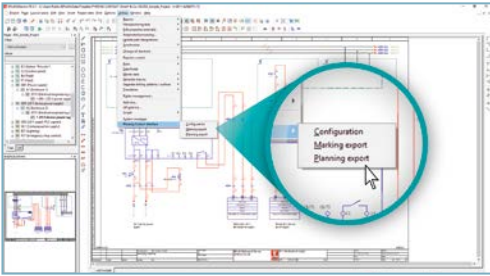
- Select the EPLAN Electric P8 version for which you would like to set up the interface. Alternatively, you can set up the interface for all EPLAN Electric P8 versions by selecting the “Integrate all” button.
- This completes the installation of the interface between PROJECT complete and the EPLAN Electric P8 software.

The interface between EPLAN Electric P8 and the PROJECT complete marking software is installed automatically when the PROJECT complete marking software is installed on the computer.

After installation of the PROJECT complete planning and marking interface in EPLAN Electric P8, the icons for the PROJECT complete interface appear in the EPLAN Electric P8 software.



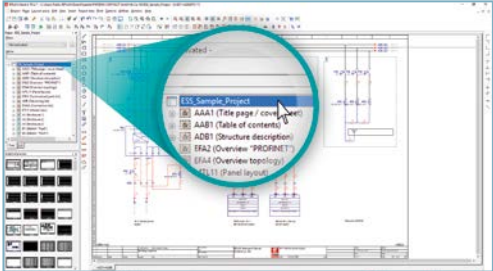
- The interface icons can be placed in the task bar via drag and drop.



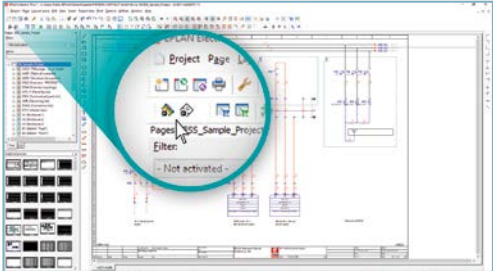
- In addition to the icons, the menu items for the interface are installed under Utilities / Phoenix Contact Interface.

PROJECT complete planning

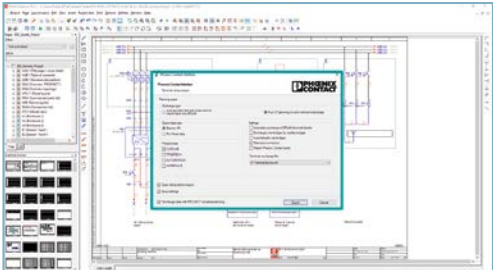
Terminal strip export from EPLAN Electric P8



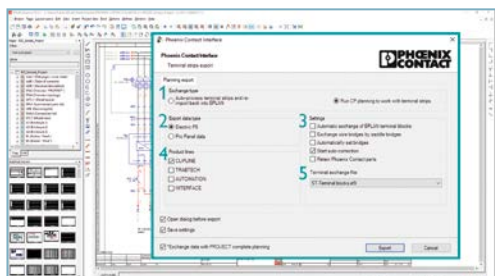
- For terminal strip export from EPLAN Electric P8, select the project or the desired area in the project tree.



- Launch the interface via the interface icon or the menu.



- The dialog box opens when the interface is launched.



• You can define the following settings in the dialog box:

1. Exchange type:

- Export to PROJECT complete
- Export to PROJECT complete and automatic reimport back into EPLAN Electric P8

2. Export data type:

- Terminal strips are exported from EPLAN Electric P8
- DIN rails assembled with terminal blocks and other products are exported from EPLAN Pro Panel

3. Settings:

- Automatic exchange of EPLAN Electric P8 terminal points with real terminal blocks
- Exchange wire bridges with plug-in bridges on a terminal strip
- Set plug-in bridges automatically
- Start auto-correction
- Predefined Phoenix Contact terminal blocks are retained

4. Product lines:

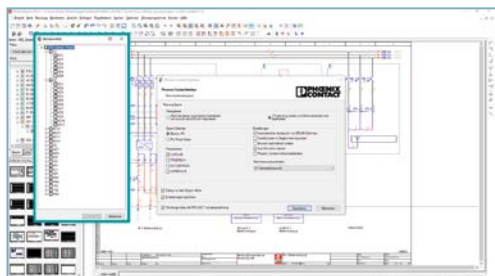
- Terminal blocks
- Other products

5. Terminal exchange file:

- Using the terminal exchange file, the user can define which terminal blocks (connection technologies) will be used for the exchange

PROJECT complete planning

Terminal strip export from EPLAN Electric P8



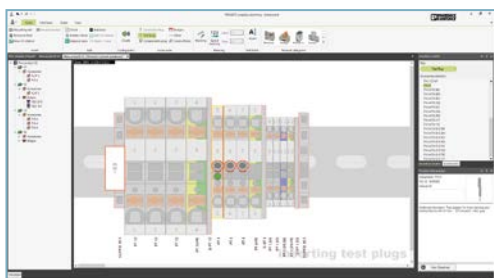
- Click on the “Export” button to open the equipment list of the selected EPLAN Electric P8 project.
- In the equipment list, select individual terminal strips, project areas or the entire project for the export.
- Once you have made your selection, click on the “Export” button to start the export.



- PROJECT complete is started. The import is performed in accordance with the settings.



- The EPLAN Electric P8 terminal points have been exchanged with real terminal blocks.
- The auto-correction function automatically adds the minimum accessories required, such as end brackets, terminal strip markers, and covers. A red outline identifies components that have been added.



- Further accessories can be added manually, except for plug-in bridges.

PROJECT complete planning

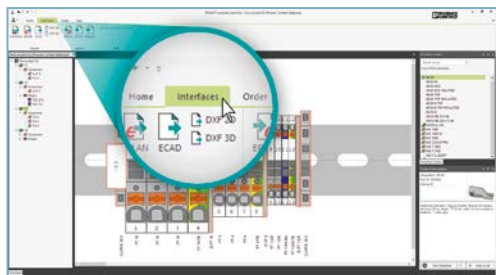
Terminal strip export to EPLAN Electric P8

For the export from PROJECT complete to EPLAN Electric P8, the EPLAN Electric P8 terminal points are replaced with real terminal blocks (the order numbers are added).

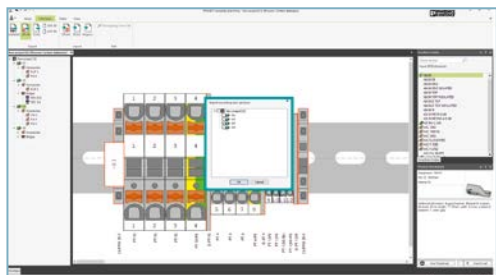
In addition, automatically or manually placed accessories are added to the relevant terminal block.

Result: complete terminal strip parts list in EPLAN Electric P8.

Note: For terminal strip export to EPLAN Electric P8, the pages containing the terminal strips should be closed in EPLAN Electric P8.



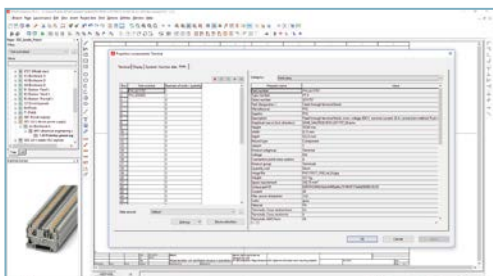
- For export to EPLAN Electric P8, enable the “Interfaces” ribbon tab.
- Export to EPLAN Electric P8 is started by clicking on the “EPLAN” button in the “Export” ribbon group.



- An overview of the terminal strips is displayed when the export is started.
- Here you can define whether all or only individual terminal strips will be exported to EPLAN Electric P8.



- Click “OK” to confirm the successful export of data to EPLAN Electric P8.



- Open the page containing the terminal strip written back to EPLAN Electric P8.
- Double-clicking on the EPLAN Electric P8 terminal point opens the “Properties (components) Terminal” window.
- On the “Parts” tab, the first row shows the added terminal block order number and the subsequent rows show the added accessories.

PROJECT complete planning

DIN rail export from EPLAN Pro Panel

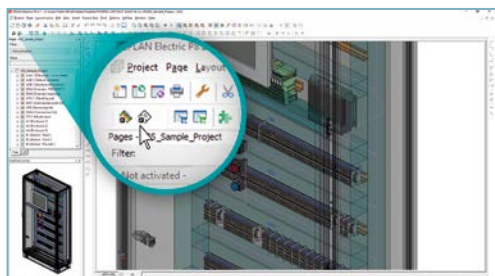
The EPLAN Pro Panel interface is used to export the assembled DIN rails to PROJECT complete. For this export, all components placed on the DIN rail are taken into account (Phoenix Contact components as well as non-Phoenix Contact components).

The non-Phoenix Contact components are mapped to PROJECT complete as a black box with the dimensions from the EPLAN Electric P8 database. The equipment ID is also placed on the black box.

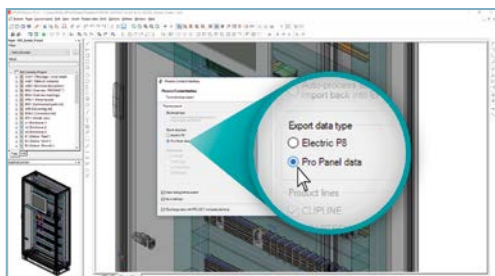
Result: copy of the assembled DIN rail from EPLAN Pro Panel in PROJECT complete.

The DIN rail imported into PROJECT complete can be used as installation documentation and as an order template for terminal strips.

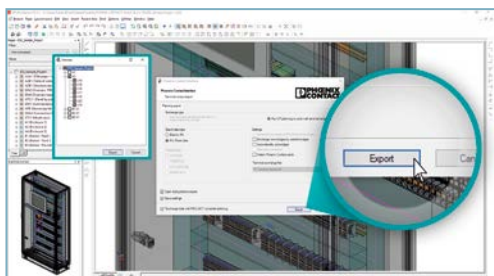
Furthermore, the marking information can be exported to PROJECT complete marking.



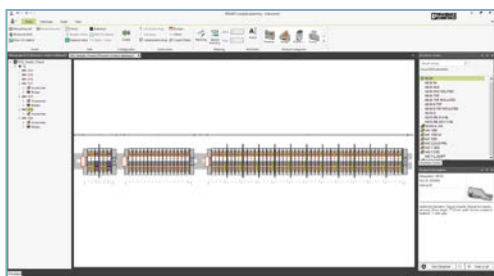
- The interface is launched via the interface icon or the menu.



- The dialog box opens when the interface is launched.
- Select EPLAN Pro Panel under “Export data type”.



- Clicking on the “Export” button opens the equipment list of EPLAN Pro Panel.
- In the equipment list, the user can select individual DIN rails, complete control cabinets or the entire project for the export.
- Once the relevant elements have been selected, clicking on the “Export” button starts the export.

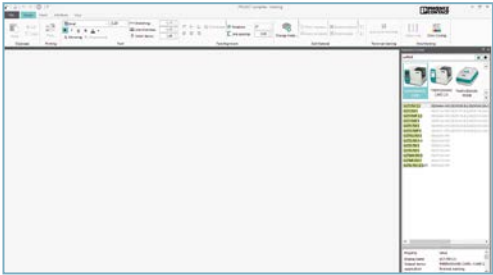


- All assembled DIN rails are imported, which includes adopting the project structure from EPLAN Pro Panel.

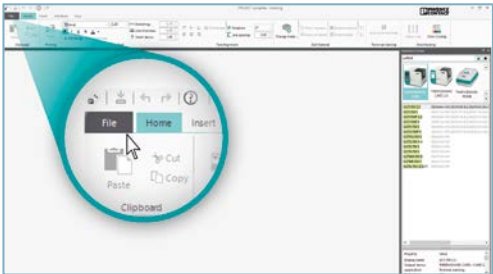
PROJECT complete marking

Setting up an interface

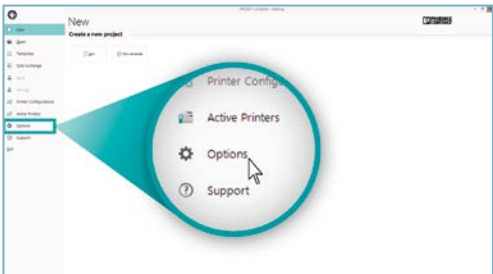
The interface between the PROJECT complete marking software and EPLAN Electric P8 is established in just a few clicks. Step-by-step instructions for setting up the interface are provided below. EPLAN Electric P8 must be closed to install the interface.



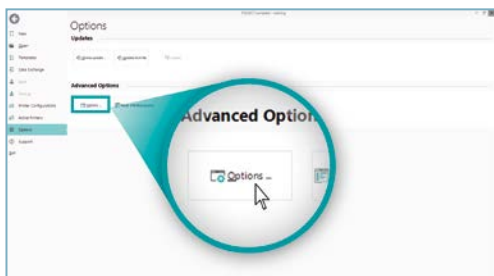
- Start the PROJECT complete marking software.



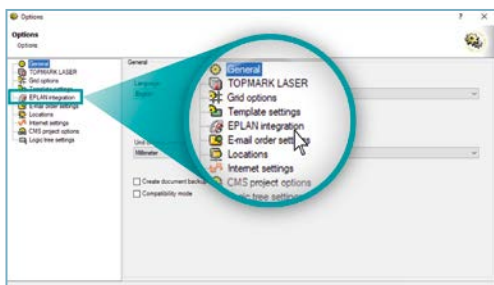
- Click on the "File" tab to access the settings area.



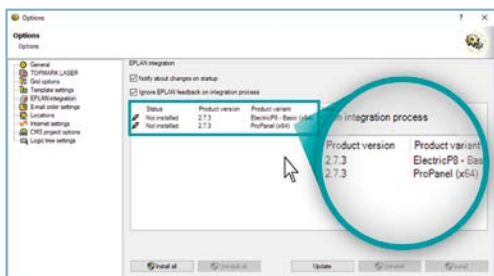
- Click on the "Options" button.



- Click on the “Options ...” button to open the advanced options for the PROJECT complete marking software.



- In the advanced options project tree, click on “EPLAN integration”.

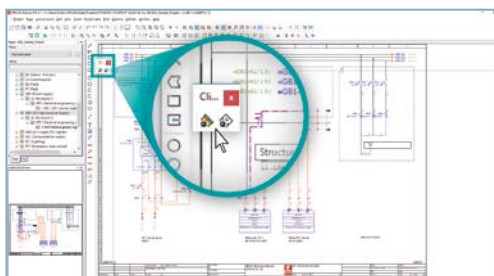


- Select the EPLAN Electric P8 version for which you would like to set up the interface. Confirm with “Install”. Alternatively, you can set up the interface for all EPLAN Electric P8 versions by selecting the “Install all” button.
- This completes the installation of the interface between PROJECT complete marking and the EPLAN Electric P8 software.

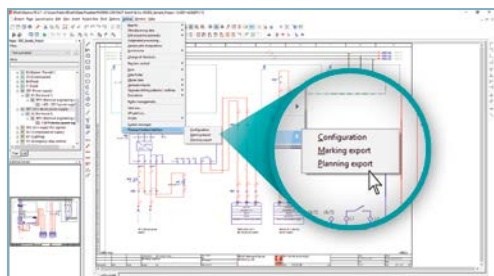
PROJECT complete marking

Setting up an interface

After installation of the planning und marking interface, the icons for the PROJECT complete interface appear in the EPLAN Electric P8 software.



- The interface icons can be placed in the task bar via drag and drop.

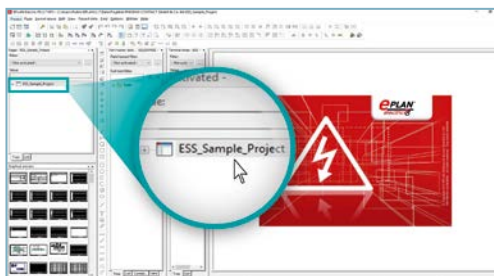


- In addition to the icons, the menu items for the interface are installed under Utilities / Phoenix Contact Interface.

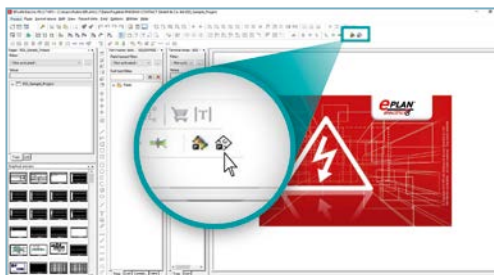
PROJECT complete marking

Data export from EPLAN Electric P8

In the marking export dialog box, the marking data is exported to PROJECT complete marking using preset export schemes. Here, the necessary export scheme for marking is simply selected and exported. PROJECT complete marking automatically imports the production and marking data into the existing import configurations.



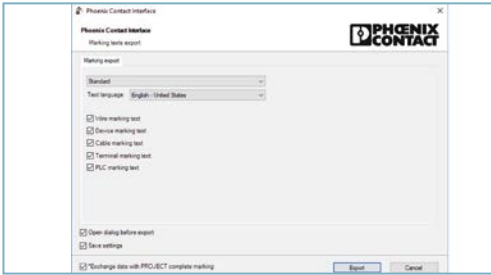
- Open the EPLAN Electric P8 program.
- In the project tree, select the project that you want to export to PROJECT complete marking.



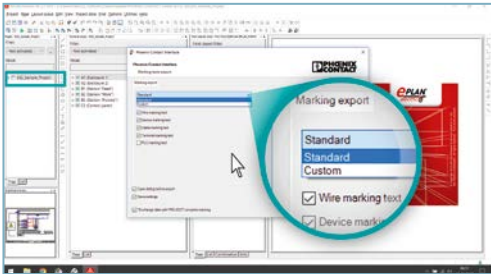
- To initialize the export of the selected project, click on the PROJECT complete marking software icon.

PROJECT complete marking

Data export from EPLAN Electric P8



- The interface for export to PROJECT complete marking opens.



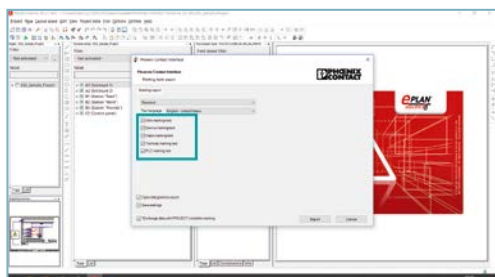
- Click on the arrow next to “Standard” to select either standard export or customer-specific export.

PROJECT complete marking

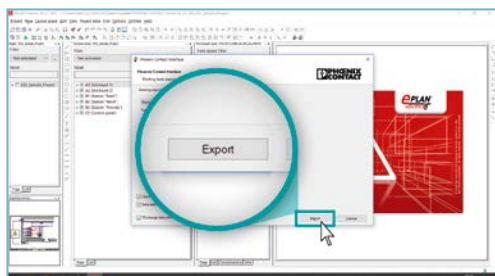
Data export from EPLAN Electric P8

For “Standard export”, preset marking export schemes are used in EPLAN Electric P8 and import configurations are used in PROJECT complete marking for the data exchange.

For customer-specific export, any number of customer-specific marking export schemes from EPLAN Electric P8 can be linked with import configurations in PROJECT complete marking for data exchange. A major advantage here is that you can link a marking export scheme from EPLAN Electric P8 to multiple import configurations in PROJECT complete marking. This means that various marking materials can be filled with one information source.



- After selecting “Standard” as the export type, select the marking information to be exported by enabling the relevant check boxes.

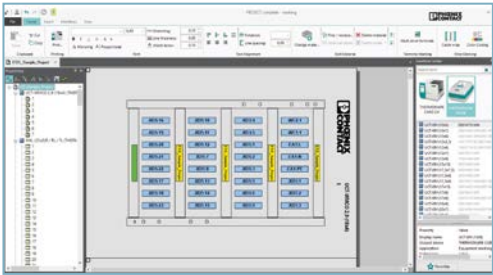


- You can now start the export from EPLAN Electric P8 to PROJECT complete marking by clicking on the “Export” button.

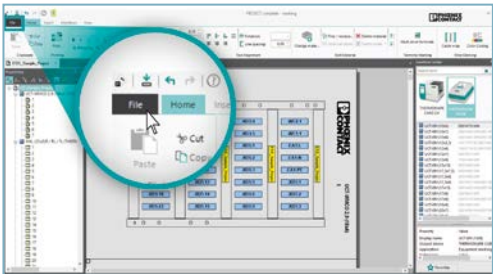
PROJECT complete marking

Setting up exchange files

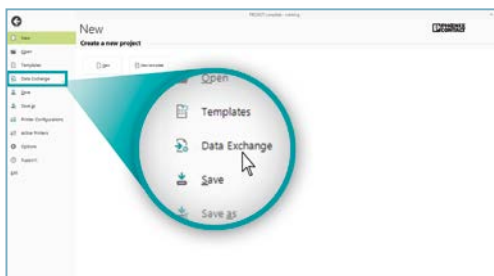
Data exchange enables you to import data from EPLAN Electric P8 into PROJECT complete marking. The import of data can be set up individually. For example, comprehensive data is assigned to the marking material here.



- PROJECT complete marking opens.
- The import of various marking materials is shown as an example here and must be adapted to the relevant marking system and marking material used by the customer.



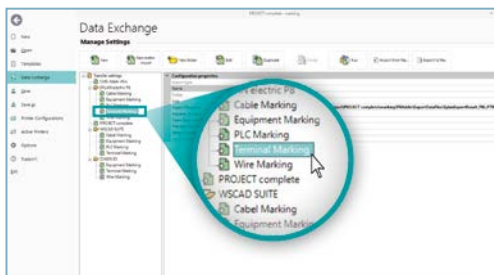
- To adapt the marking system and marking material, click on the "File" button.



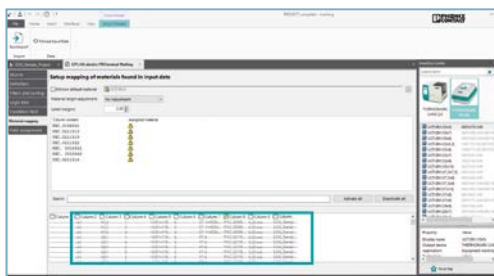
- Next click on the “Data Exchange” button.



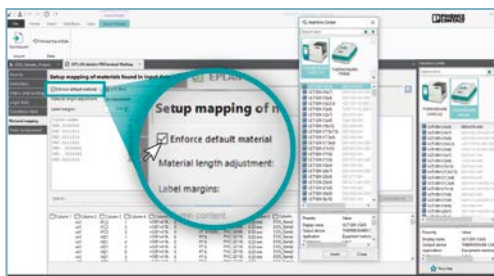
- The import configuration files are listed on the “EPLAN Electric P8” tab. This is where the marking systems and marking materials used are assigned to the relevant product order numbers.



- For example, to adapt the data to the required marking system for a configuration, select “Terminal Marking”.



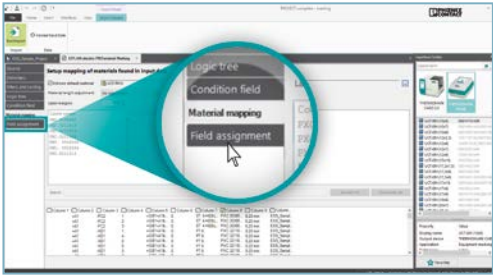
- To output data on different materials, click the column that contains the values for the material assignment.
- For standard export, column 8 contains “terminal block order numbers”. You can use the terminal block order numbers to select your marking system and the corresponding marking material.



- If you want to assign all data to just one marking material, enable the “Enforce default material” check box and then select your marking system and the corresponding material.

PROJECT complete marking

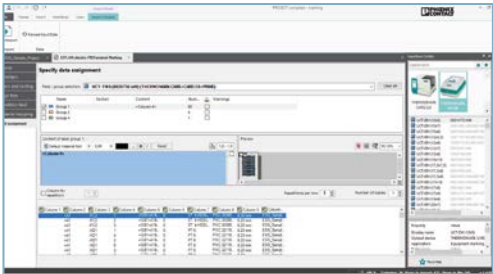
Setting up exchange files



- On the “Field assignment” tab, decide how data should be output on the material. The labels for a material description are divided into groups.



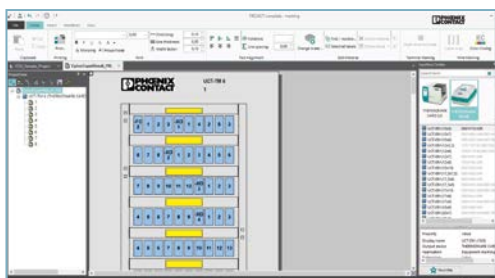
- The example shows the material description for UCT-TM 6. Group 1 (highlighted in blue) contains the labels that are used for marking purposes. Groups are also assigned to the frame so that it can be marked as well. The horizontal frame sections are defined as yellow and green groups and serve as additional marking, e.g., project information.
- Select which part of the material is to be marked, e.g., Group 1 (marking labels).



- To assign the data to a group: move the desired column to the “Content of label group 1” window via drag and drop.
- You can drag in the content of several columns, insert a line break or add text.
- You can also edit the font properties or insert a counter. The effect on the material is displayed in the preview.



- Click on “Save” to save the import configuration. The import can be restarted via “Run Import”.



- This will set up the import for the marking of terminal blocks. All previous settings, such as material assignments, will be saved automatically for the next import from EPLAN Electric P8.
- If you export an EPLAN project with new products for which no material has been assigned yet, you need to reassign these products once and save them. This means that when you perform a new export from EPLAN Electric P8, all marking data will be imported, automatically assigned to the relevant marking materials, and can be output with the relevant marking system.

Software overview

The PROJECT complete planning and marking software is available to download free of charge. Experience the innovative approach to implementing your project.

Link to software download:

phoenixcontact.com/PROJECT_complete

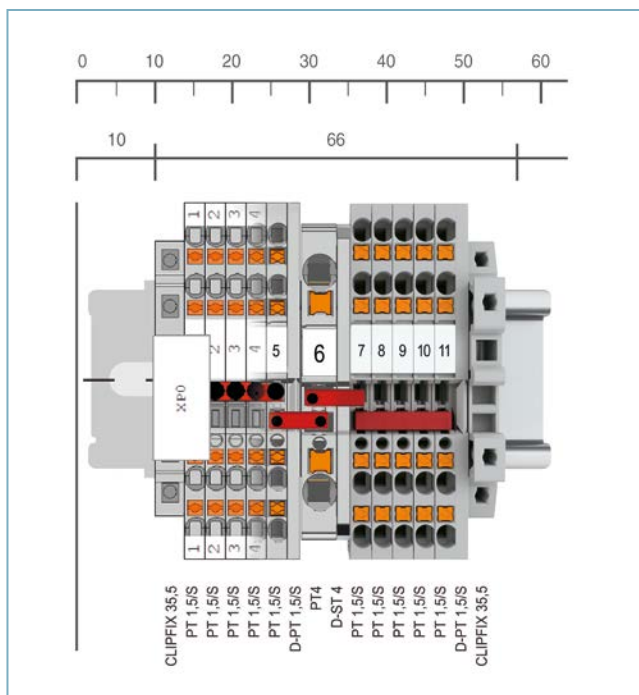
Link to software tutorials:

phoenixcontact.com/Software_Tutorials



Website:

PROJECT complete – process
innovations for control cabinet
manufacturing



PROJECT complete

Order No. 1050453

CPU:

1 GHz or faster

RAM:

2 GB RAM

Hard disk space:

10 GB available memory

Screen resolution:

Recommended minimum resolution 1366 x 768 pixels

Imaging devices:

All functions are available via the mouse and keyboard

Operating systems:

Windows 10, Windows 11

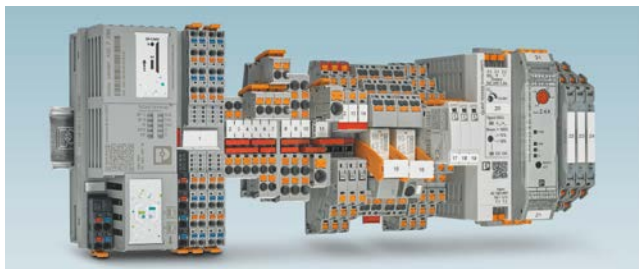
COMPLETE line – the comprehensive solution for your control cabinet

COMPLETE line is a system comprising technologically leading and coordinated hardware and software products, consulting services, and system solutions that help you optimize your processes in control cabinet manufacturing. Engineering, purchasing, installation, and operation become significantly easier for you.





Your advantages in detail:



Comprehensive product portfolio

With COMPLETE line, we offer a complete product portfolio of technologically leading products.



Intuitive handling

Thanks to the simple, intuitive handling of the coordinated hardware products you will save time regarding assembly, startup, and maintenance.



Save time throughout the entire engineering process

The PROJECT complete planning and marking software supports the entire process of control cabinet manufacturing.



Reduced logistics costs

Reduced variety of parts with standardized marking, bridging, and testing accessories.



Optimized processes in control cabinet manufacturing

COMPLETE line supports you, from engineering through to manufacturing, in making your control cabinet production as efficient as possible.

COMPLETE line

The new standard for the control cabinet

Discover the extensive COMPLETE line product range and find out more about COMPLETE line and the comprehensive solutions for your control cabinet.

Visit our website:

phoenixcontact.com/completeline



Open communication with customers and partners worldwide

Phoenix Contact is a global market leader based in Germany. We are known for producing future-oriented products and solutions for the electrification, networking, and automation of all sectors of the economy and infrastructure. With a global network reaching across more than 100 countries with over 20,000 employees, we maintain close relationships with our customers, something we believe is essential for our common success.

Our wide range of innovative products makes it easy for our customers to implement the latest technology in a variety of applications and industries. This especially applies to the target markets of energy, infrastructure, industry, and mobility.

You can find your local partner at
[phoenixcontact.com](https://www.phoenixcontact.com)